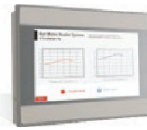


# iE Series



Model		MT8051iE	MT8053iE	MT8070iE	MT8071iE	MT8073iE	MT8102iE
Display	Display	4.3" TFT	4.3" TFT	7" TFT	7" TFT	7" TFT	10.1" TFT
	Resolution	480 x 272	480 x 272	800 x 480	800 x 480	800 x 480	1024 x 600
	Brightness (cd/ m <sup>2</sup> )	400	400	400	400	400	350
	Contrast Ratio	500: 1	500: 1	800: 1	800: 1	800: 1	500: 1
	Backlight Type	LED	LED	LED	LED	LED	LED
	Backlight Life Time	>30,000 hrs.	>30,000 hrs.	>30,000 hrs.	>30,000 hrs.	>30,000 hrs.	50,000 hrs.
	Colors	16.7M	16.7M	16.7M	16.7M	16.7M	16.7M
	LCD Viewing Angle (T/B/L/R)	50/70/70/70	50/70/70/70	80/60/80/80	80/60/80/80	80/60/80/80	70/70/80/80
Pixel Pitch (mm)	0.198(H) x 0.198(V)	0.198(H) x 0.198(V)	0.1926(H) x 0.179(V)	0.1926(H) x 0.179(V)	0.1926(H) x 0.179(V)	0.2175(H) x 0.2088(V)	
Touch Panel	Type	4-wire Resistive Type	4-wire Resistive Type	4-wire Resistive Type	4-wire Resistive Type	4-wire Resistive Type	4-wire Resistive Type
	Accuracy	Active Area Length(X)±2%, Width(Y)±2%	Active Area Length(X)±2%, Width(Y)±2%	Active Area Length(X)±2%, Width(Y)±2%	Active Area Length(X)±2%, Width(Y)±2%	Active Area Length(X)±2%, Width(Y)±2%	Active Area Length(X)±2%, Width(Y)±2%
Memory	Flash	128 MB	128 MB	128 MB	128 MB	128 MB	128 MB
	RAM	128 MB	128 MB	128 MB	128 MB	128 MB	128 MB
Processor		32-bit RISC 600MHz	32-bit RISC 600MHz	32-bit RISC 600MHz	32-bit RISC 600MHz	32-bit RISC 600MHz	32-bit RISC 600MHz
I/O Port	USB Host	USB 2.0 x 1	USB 2.0 x 1	USB 2.0 x 1	USB 2.0 x 1	USB 2.0 x 1	USB 2.0 x 1
	Ethernet	10/100 Base-T x 1	LAN 1: 10/100/1000 Base-T x 1 LAN 2: 10/100 Base-T x 1	10/100 Base-T x 1		10/100/1000 Base-T x 2	10/100 Base-T x 1
COM Port		COM1: RS-232/RS-485 2W/4W COM3: RS-485 2W	COM1: RS-232/RS-485 2W/4W COM3: RS-485 2W	COM1: RS-232/ RS-485 2W/4W COM3: RS-485 2W	COM1: RS-232 COM2: RS-485 2W/4W COM3: RS-485 2W	COM1: RS-232 COM2: RS-485 2W/4W COM3: RS-232/RS-485 2W*2	Con.A: COM1 RS-485 2W, COM2 RS-485 2W/4W, COM3 RS-485 2W/4W*1 Con.B: COM1 RS-232 / COM3 RS-232*2
	RS-485 Dual Isolation	N/A	N/A	Yes	N/A	N/A	N/A
RTC		Built-in	Built-in	Built-in	Built-in	Built-in	Built-in
Power	Input Power	22~28VDC	22~28VDC	24±20%VDC	24±20%VDC	24±20%VDC	24±20%VDC
	Power Isolation	Built-in	Built-in	N/A	Built-in	Built-in	Built-in
	Power Consumption	450mA@24VDC	450mA@24VDC	350mA@24VDC	450mA@24VDC	600mA@24VDC	650mA@24VDC
	Voltage Resistance	500VAC (1 min.)	500VAC (1 min.)	500VAC (1 min.)	500VAC (1 min.)	500VAC (1 min.)	500VAC (1 min.)
	Isolation Resistance	Exceed 50MΩ @ 500VDC	Exceed 50MΩ @ 500VDC	Exceed 50MΩ @ 500VDC	Exceed 50MΩ @ 500VDC	Exceed 50MΩ @ 500VDC	Exceed 50MΩ @ 500VDC
	Vibration Endurance	10 to 25Hz (X, Y, Z direction 2G 30 minutes)	10 to 25Hz (X, Y, Z direction 2G 30 minutes)	10 to 25Hz (X, Y, Z direction 2G 30 minutes)	10 to 25Hz (X, Y, Z direction 2G 30 minutes)	10 to 25Hz (X, Y, Z direction 2G 30 minutes)	10 to 25Hz (X, Y, Z direction 2G 30 minutes)
Specification	PCB Coating	Yes	Yes	Yes	Yes	Yes	Yes
	Enclosure	Plastic	Plastic	Plastic	Plastic	Plastic	Plastic
	Dimensions WxHxD	128 x 102 x 32 mm	128 x 102 x 32 mm	200.3 x 146.3 x 34 mm	200.3 x 146.3 x 34 mm	200.3 x 146.3 x 34 mm	271 x 213 x 36.4 mm
	Panel Cutout	119 x 93 mm	119 x 93 mm	192 x 138 mm	192 x 138 mm	192 x 138 mm	260 x 202 mm
	Weight	Approx. 0.25 kg	Approx. 0.25 kg	Approx. 0.6 kg	Approx. 0.6 kg	Approx. 0.6 kg	Approx. 1 kg
	Mount	Panel mount	Panel mount	Panel mount	Panel mount	Panel mount	Panel mount
Environment	Protection Structure	UL Type 4X (indoor use only) / NEMA4 / IP65 Compliant Front Panel	UL Type 4X (indoor use only) / NEMA4 / IP65 Compliant Front Panel	UL Type 4X (indoor use only) / NEMA4 / IP65 Compliant Front Panel	UL Type 4X (indoor use only) / NEMA4 / IP65 Compliant Front Panel	UL Type 4X (indoor use only) / NEMA4 / IP65 Compliant Front Panel	UL Type 4X (indoor use only)*3/ NEMA4 / IP65 Compliant Front Panel
	Storage Temperature	-20° ~ 60° C (-4° ~ 140° F)	-20° ~ 60° C (-4° ~ 140° F)	-20° ~ 60° C (-4° ~ 140° F)	-20° ~ 60° C (-4° ~ 140° F)	-20° ~ 60° C (-4° ~ 140° F)	-20° ~ 60° C (-4° ~ 140° F)
	Operating Temperature	0° ~ 45° C (32° ~ 113° F)	0° ~ 45° C (32° ~ 113° F)	0° ~ 50° C (32° ~ 122° F)	0° ~ 50° C (32° ~ 122° F)	0° ~ 50° C (32° ~ 122° F)	0° ~ 50° C (32° ~ 122° F)
	Relative Humidity	10% ~ 90% (non-condensing)	10% ~ 90% (non-condensing)	10% ~ 90% (non-condensing)	10% ~ 90% (non-condensing)	10% ~ 90% (non-condensing)	10% ~ 90% (non-condensing)
Certificate	CE	CE marked	CE marked	CE marked	CE marked	CE marked	CE marked
	UL	cULus Listed	cULus Listed	cULus Listed	cULus Listed	cULus Listed	cULus Listed (UL 61010-2-201)*3
	ATEX	N/A	N/A	N/A	ATEX Zone 2/22 Category 3 G/D	ATEX Zone 2/22 Category 3 G/D	N/A
Software		EasyBuilder Pro EasyAccess 2.0 (Optional)	EasyBuilder Pro Built-in EasyAccess 2.0	EasyBuilder Pro EasyAccess 2.0 (Optional)		EasyBuilder Pro Built-in EasyAccess 2.0	EasyBuilder Pro EasyAccess 2.0 (Optional)

\*1 MT8102iE: COM3 RS-485 4W will not be available when COM1 RS-485 2W is used.

\*2 MT8073iE/ MT8102iE: Only Tx & Rx (no RTS/CTS) may be used for COM1 RS-232 when COM3 RS-232 is also used.

\*3 MT8102iE: For customers who require UL, please order MT8102iEU. (MT8102iE is not UL listed.)