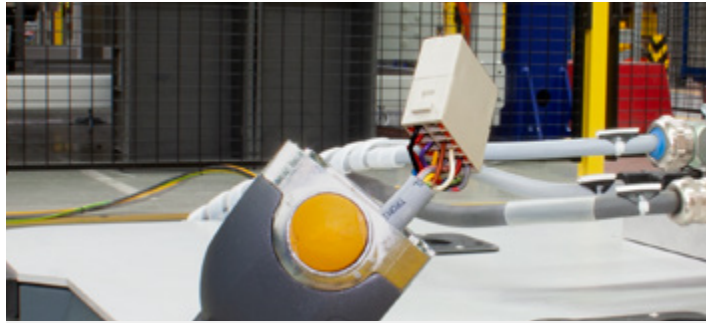


# Han-Modular® Push-In



Pushing Performance  
Since 1945



The Push-In technology further expands the broad HARTING portfolio with an additional robust and reliable field termination technology.

With Push-In the assembly times can be reduced up to 30% and the flexibility in the field is raised significantly.

Our solutions differentiates itself by an efficient and easy Plug & Play assembly process, helps eliminate mistakes, for example by ensuring a correct build up due to the coding of our products. HARTING offers the biggest variety regarding the choice of termination technologies on the market and often a combination of those technologies leads to the best possible result. With the Push-In termination technology HARTING now offers an additional option for the perfect setup of your industrial connector.

## Your benefits at a glance:

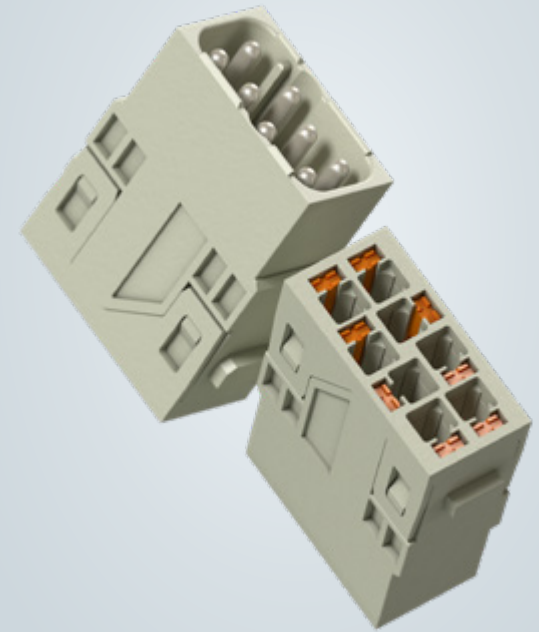
- **Up to 30% less assembly time** with direct insertion of the conductor into the contact chamber
- **Easy handling** due to tool-less termination
- **Cost savings** compared to alternative termination technologies
- **Maximal flexibility** - suitable for ferrules, stranded wires and solid conductors
- **Compatible** with identical products with other termination technologies

HARTING Han-Modular® Push-In

## HARTING.com – the gateway to your local website.



Pushing Performance  
Since 1945



PEOPLE. POWER. PARTNERSHIP.

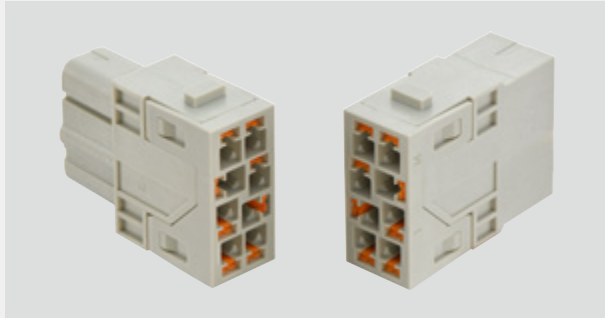
## HARTING Han-Modular® Push-In

Quick and intuitive field termination technology

HARTING Technology Group  
info@HARTING.com  
www.HARTING.com

WD | 2023-06 | 0.25 | 98.42.977.0201 | Version 2

## Han-Modular® Push-In System



Termination side of the Han-Modular® Push-In

The Push-In termination technology is an advance development of the cage-clamp technology. The quick and uncomplicated assembly ensures consistent quality and robustness for this new product range.

For processing the wide ranged area of cross sections, HARTING offers numerous products from the Han® portfolio to always provide a suitable solution for the varying requirements throughout the different applications.

The toolless assembly allows the connection of wires to the insert without any additional steps of preparation. This feature saves time, money and resources altogether.

The Push-In technology offers the possibility to assemble different types of wires. The options cover stranded wires to solid wires including wires equipped with ferrules (insulated/uninsulated).

Push-In is a further addition to the existing HARTING portfolio to support you with the different type of challenges in the field.



<https://www.harting.com/push-in>

## Details and part numbers

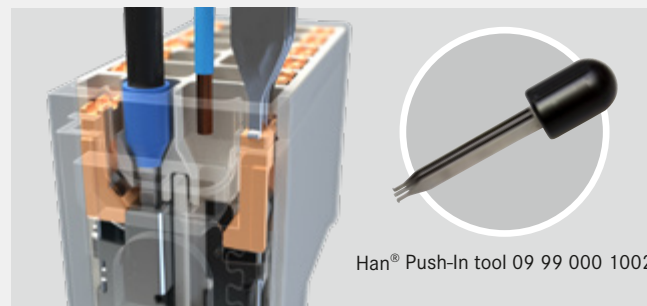
	Han® C	Han® CC	Han E®	Han® EE	Han DD®
	3 contacts 40 A / 690 V 1.5 ... 6 mm <sup>2</sup>	4 contacts 40 A / 830 V 1.5 ... 6 mm <sup>2</sup>	6 contacts 16 A / 500 V 0.5 ... 2.5 mm <sup>2</sup>	8 contacts 16 A / 400 V 0.5 ... 2.5 mm <sup>2</sup>	12 contacts 10 A / 250 V 0.14 ... 1.5 mm <sup>2</sup>
Termination	Push-In	Push-In	Push-In	Push-In	Push-In
Male	09 14 003 5001	09 14 004 5001	09 14 006 5001	09 14 008 5001	09 14 012 5001
Female	09 14 003 5101	09 14 004 5101	09 14 006 5101	09 14 008 5101	09 14 012 5101

Push-In inserts are mating compatible with the following modules

	Han® C	Han® CC	Han E®	Han® EE	Han DD®
Termination	Crimp	Crimp	Crimp	Crimp	Crimp
Male	09 14 003 3001	09 14 004 3041	09 14 006 3001	09 14 008 3001	09 14 012 3001
Female	09 14 003 3101	09 14 004 3141	09 14 006 3101	09 14 008 3101	09 14 012 3101

Push-In inserts are mating compatible with the following modules

	Han® C	Han® CC	Han E®	Han® EE	Han DD®
Termination	Axial screw		Quick Lock	Quick Lock	Quick Lock
Male	09 14 003 2601		09 14 006 2633	09 14 008 2633	09 14 012 2632
Female	09 14 003 2701		09 14 006 2733	09 14 008 2733	09 14 012 2732
Male	09 14 003 2602			09 14 008 2634	09 14 012 2634
Female	09 14 003 2702			09 14 008 2734	09 14 012 2734



Han® Push-In tool 09 99 000 1002

The Han® Push-In tool can be used as a supporting element during the assembly process. When using stranded wires within Push-In the tool can block the actuator of the insert. The spring of the contact system is now completely opened and the stranded wire can be inserted safely.

### General information:

It is the customer's responsibility to check whether the components illustrated in this catalogue also comply with different regulations from those stated in special fields of applications. We reserve the right to modify designs or substance of content in order to improve quality, keep pace with tech-nological advancement or meet particular requirements in production. No part of this catalogue may be reproduced in any form (print, photocopy, microfilm or any other process) or pro-cessed, duplicated or distributed by means of electronic systems without the prior written consent of HARTING Electric GmbH & Co. KG, Espelkamp.